



NEW ARRIVAL

**Android EMS/RF**

**Sculpture**

LESS

**-30%**  
Fat

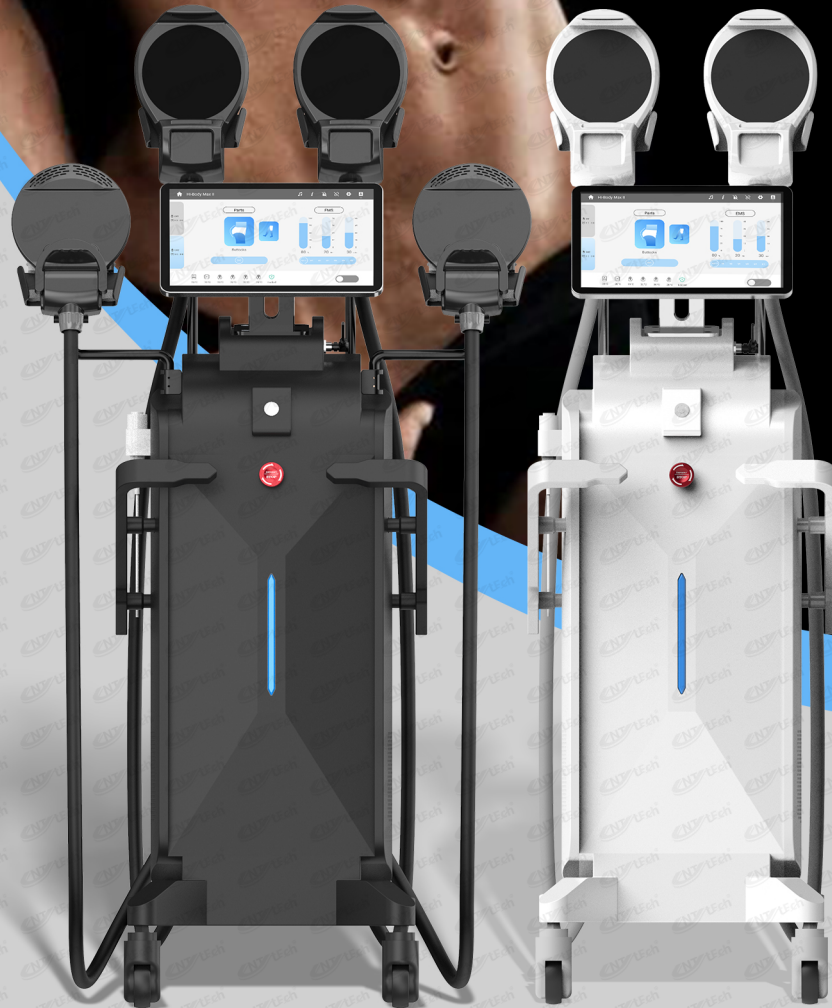
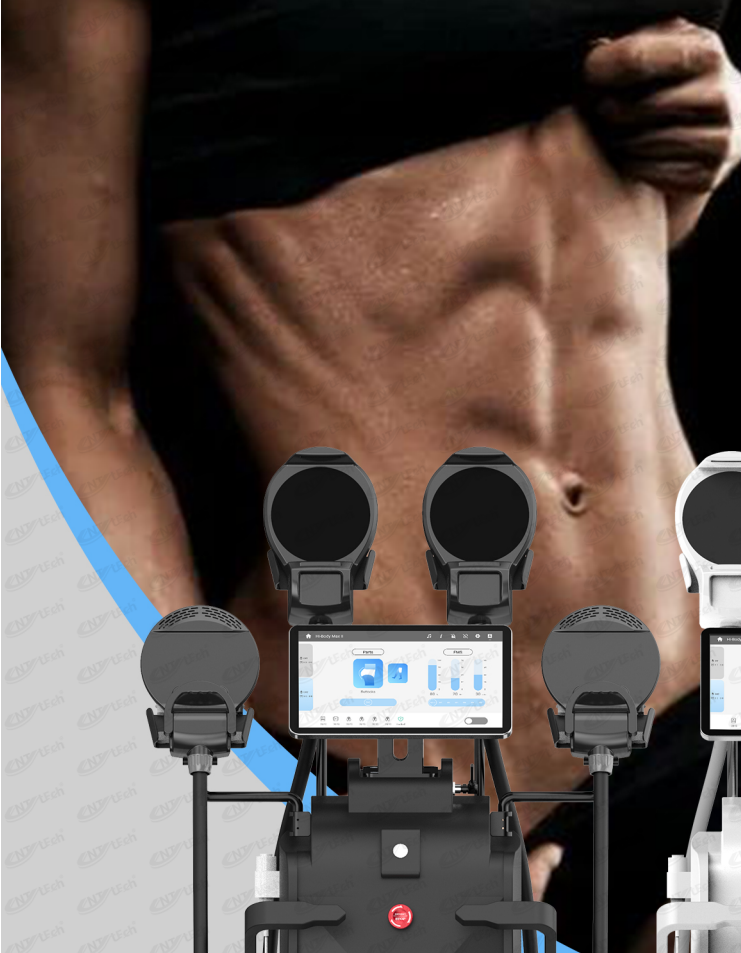
**+25%**  
Muscle

MORE



# EMS+RF

## Muscle Building & Fat Burning



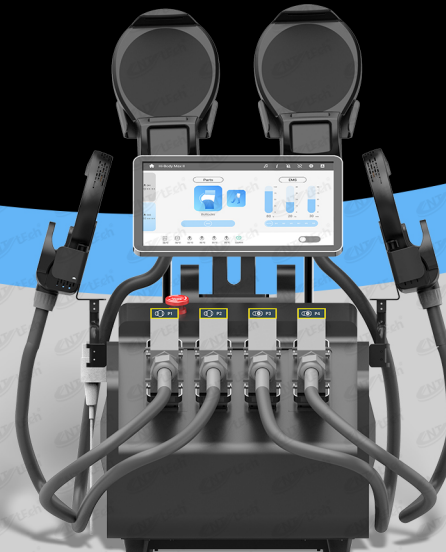
Android System



Body Fat Scales

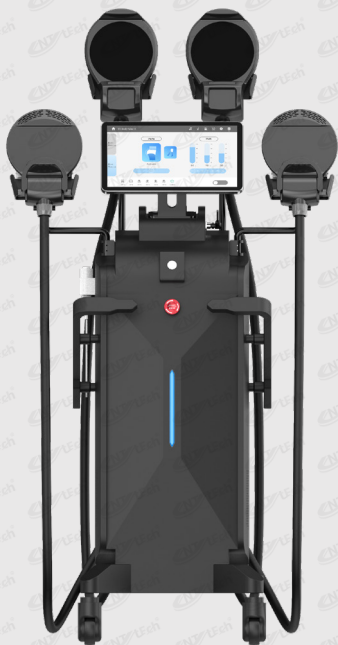


Pelvic Floor Chair Cushion



# DISPLAY

HI-BODY MAX2+



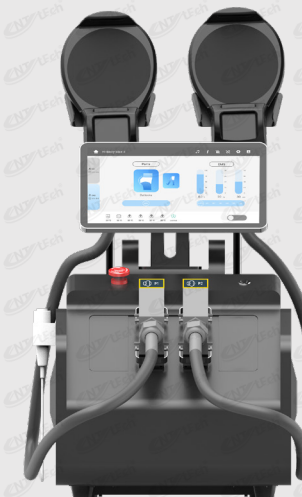
HI-BODY MAX1+



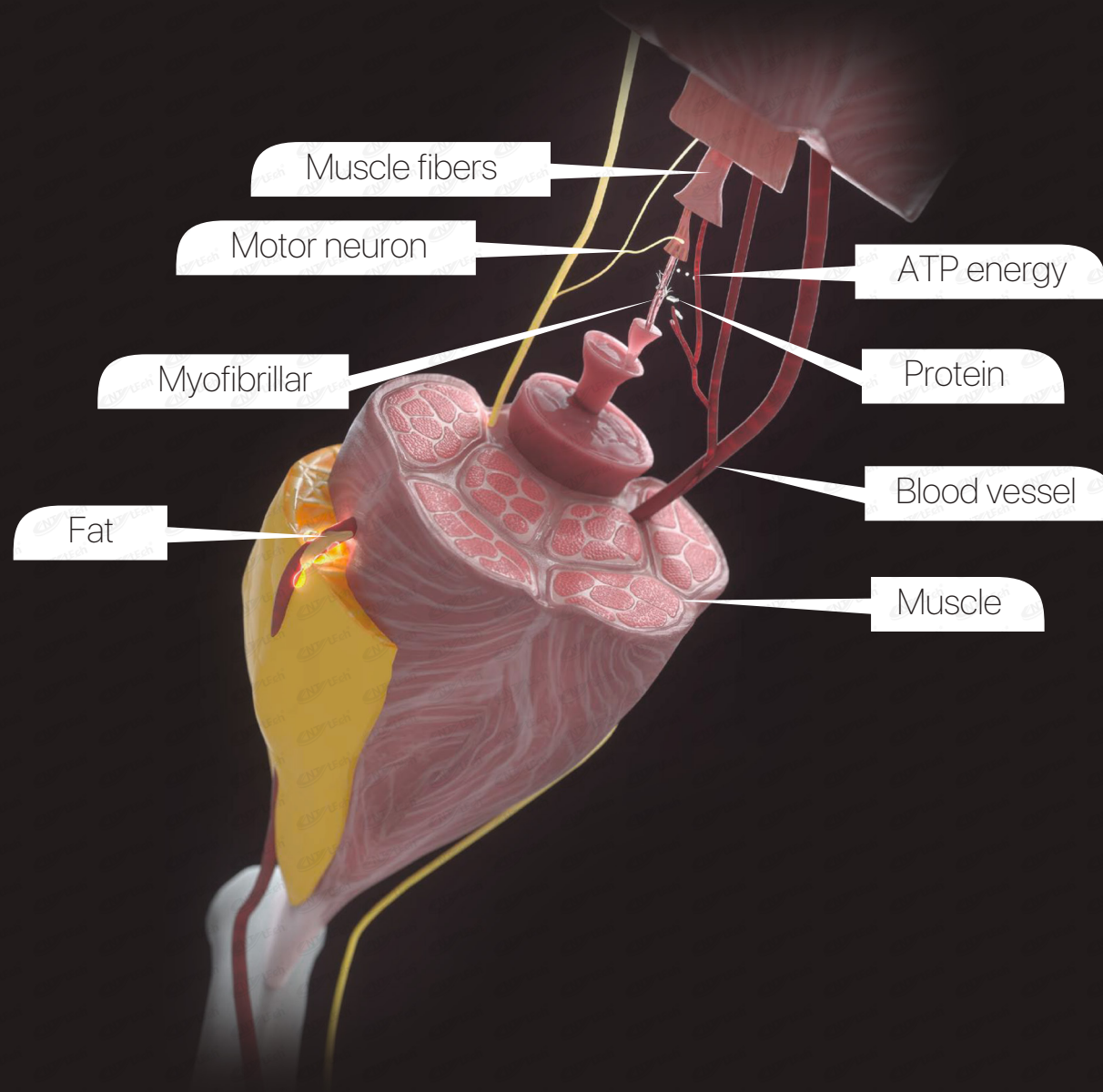
HI-BODY PRO2+



HI-BODY PRO1+



# MUSCLE ANATOMY



# HOW IT WORKS?



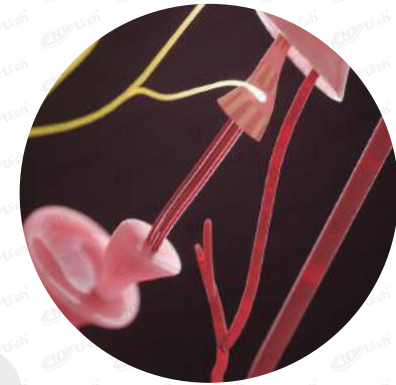
## 1 Myofibrillars loosen

As age grows, Myofibrillars are loose and fragile because of pre-gency, fat accumulation, lack of exercies and other factors. People become fatter and flabbier.



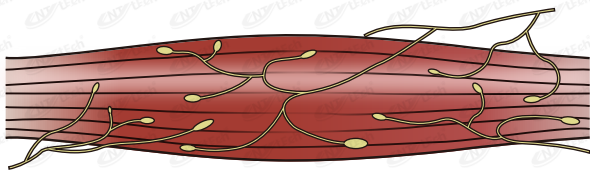
## 2 Myofibrillars break

The equipment interact with muscle neurons to induce supra maximal muscle contractions. In the process of continuous muscle contactons, part of Myo-fibrillar are gradually broken to cause musceself-repair.

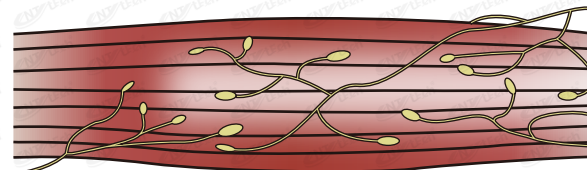
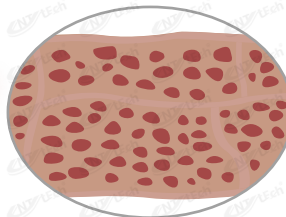


## 3 Myofibrillars repair

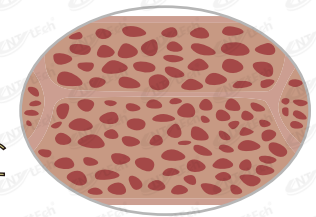
After treatment, Myofibrillars tend to be strong and tight. Muscle becomes firm and elastic. It responds with a deep remodeling of inner structure that result in muscle building and growth and body shaping.



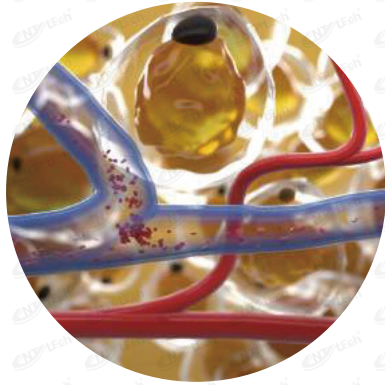
Before treatment: Muscle is thin and the circumference of muscle is short. Myofibrillar is loose with small density.



After treatment: Muslce is strong and the circumference of muscle is long. Myofibrillar is strenthened and increased with large density.

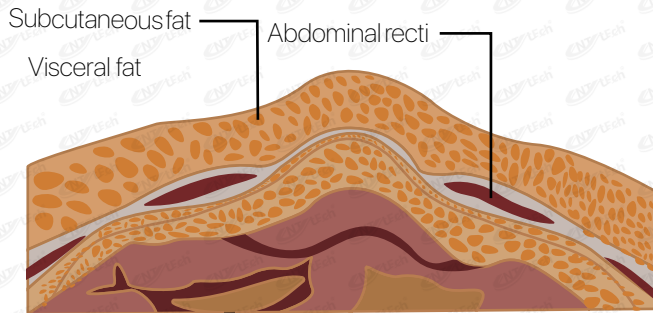


# HOW IT WORKS?

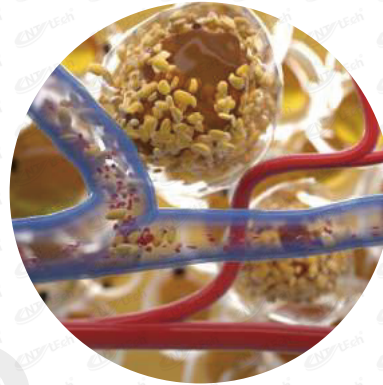


## 1 Fat accumulation

When gain excess weight, more fat accumulates in the existing fat cells, causing them to swell and form cellulite. Fat accumulation can occur in the abdomen, buttocks and thighs.

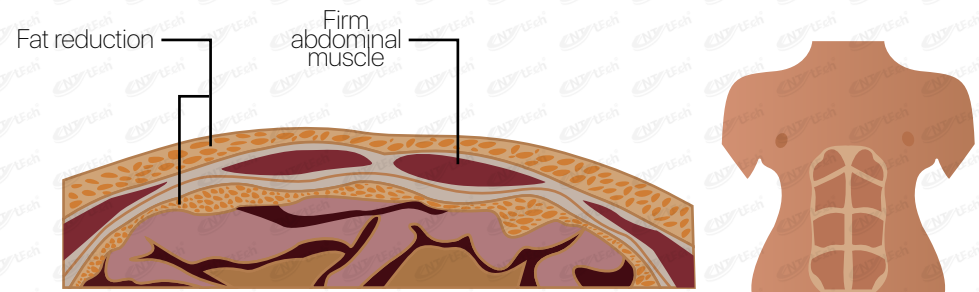


Before treatment: Subcutaneous fat and visceral fat are thick. Muscle is thin with fatty and loose body.

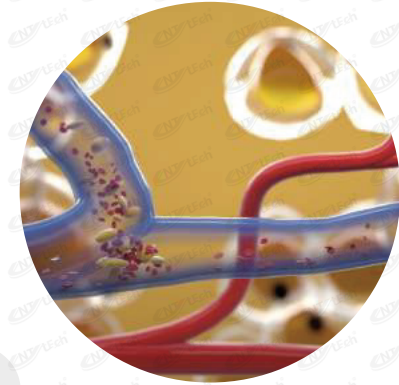


## 2 Fat disruption

Electro Magnetic Wave, intensive supramaximal contractions enhance release of epinephrine which triggers a cascade effect leading to supramaximal lipolysis in fat cells.



After treatment: Subcutaneous fat and visceral fat are reduced. Muscle is strengthened and increased with firm and strong body.



## 3 Fat loss

After UNT device treatment, targeted fat cells shrink in volume and are eliminated.

# WORKING MODE

## Exclusive Intelligent System

Auto mode and six treatment modes to meet the needs of different customers and different parts of the body. Meanwhile, for experienced operators, energy, frequency and time can be adjusted according to the type of customers to meet more requirements.



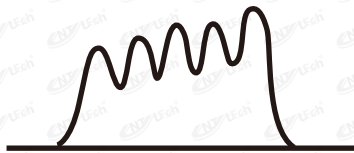
1



2



3



4



5



6

# HANDLE DISPLAY

Body handle



Handle linker



Limb handle



EMS



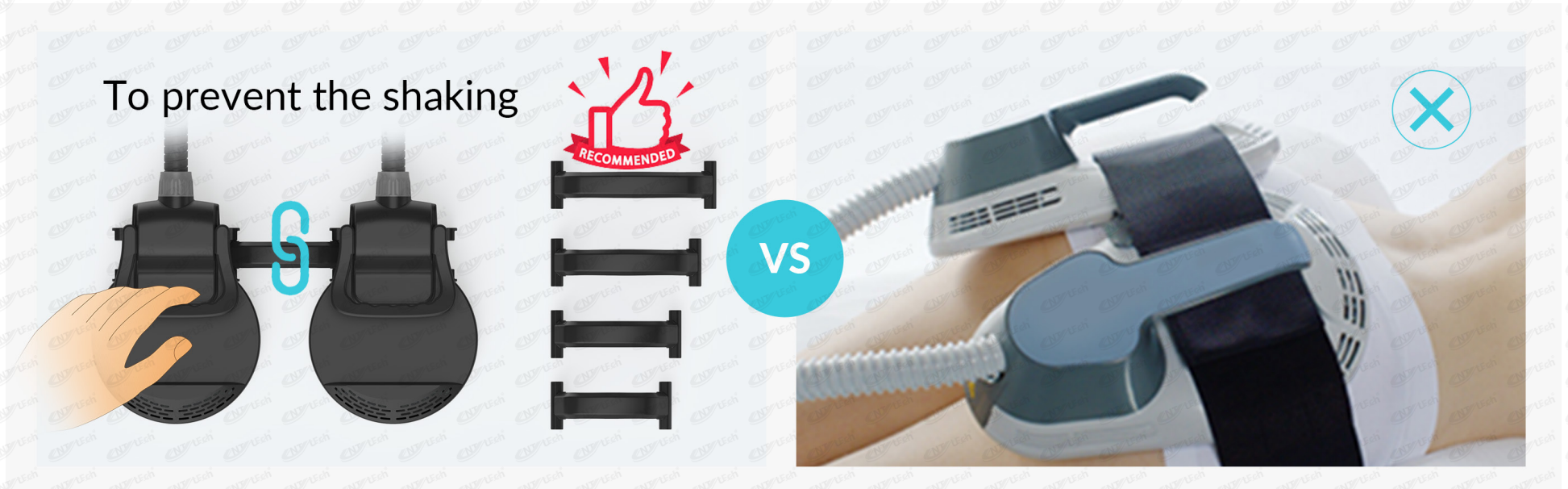
RF





# Body handle advantages

To avoid movement and falling off during treatment, there are 4 specially designed lengths' connection for the body handles, which can be selected according to the treatment sites and the treatment customers.



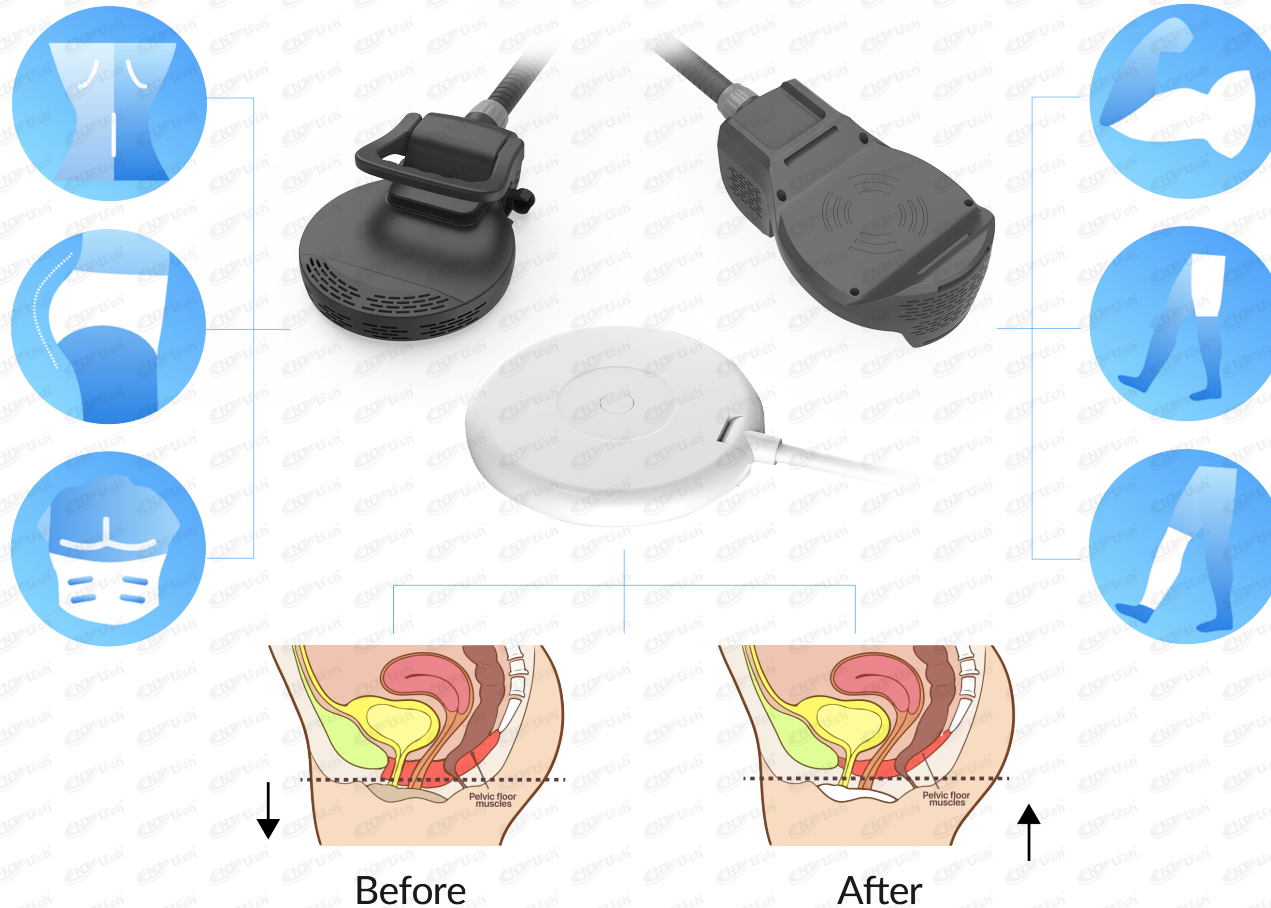
# Limb Handle Advantages

The limb handle has dual output functions of RF and EMS. Either single EMS/RF or EMS+RF can be selected according to different treatment functions/areas/customers. One handle equals two, to save space and cost for customers.

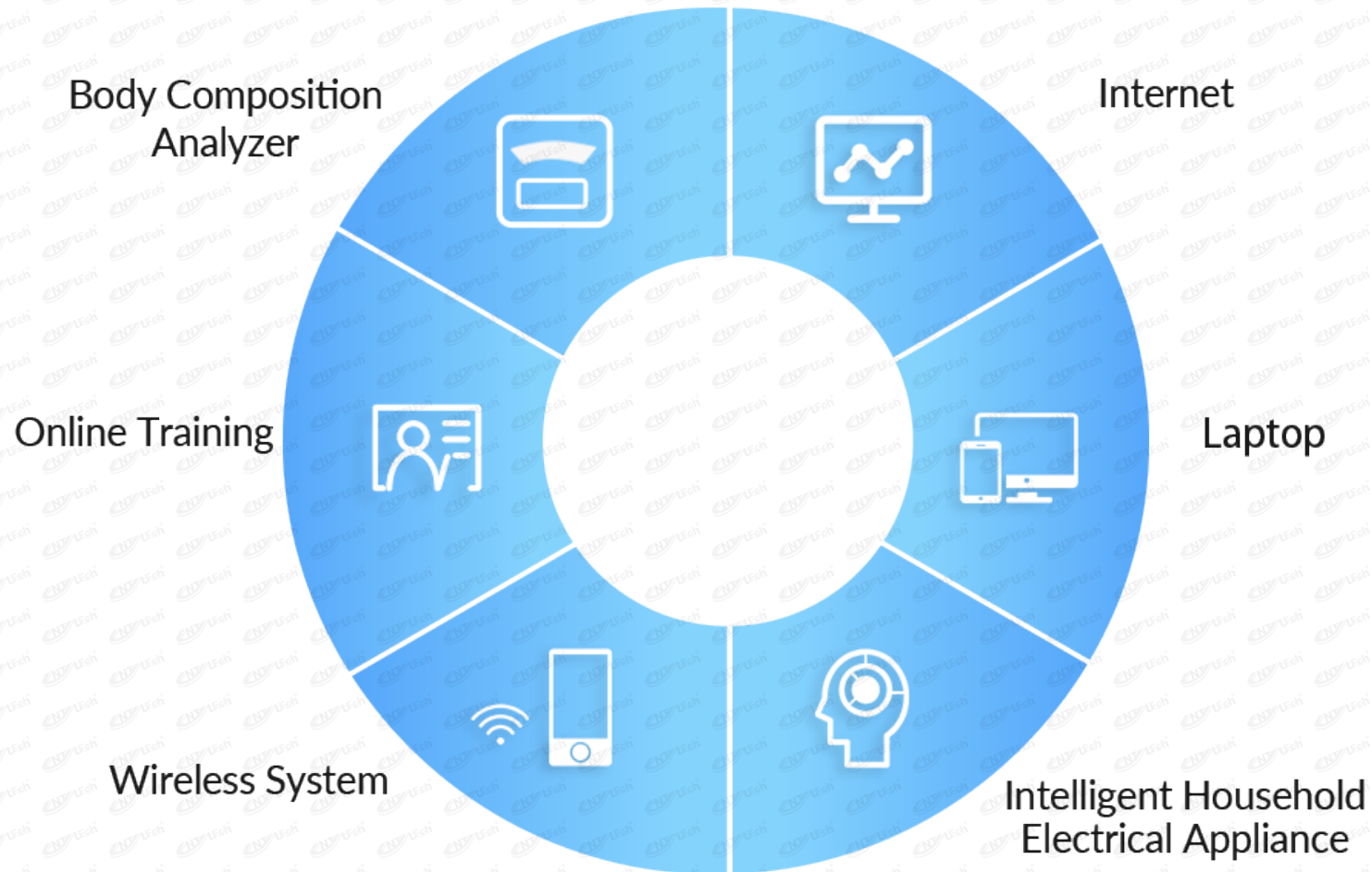


# Handle Application

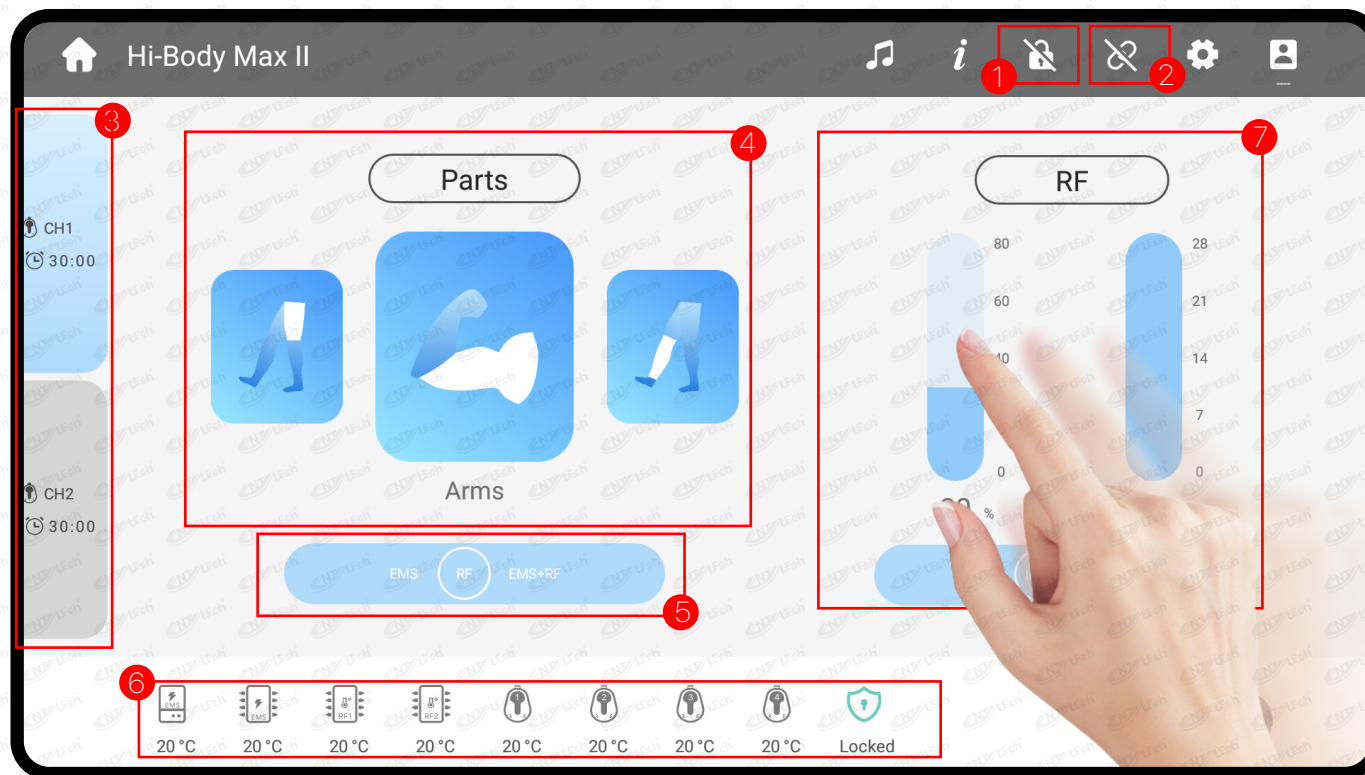
Muscle Building, Fat Burning, Body Slimming, Butt Lifting, The average muscle thickness increased by 16%, The average improvement of rectus abdominis was 11%.  
Prevention and treatment of stress urinary incontinence.  
Promote postpartum recovery.  
Increased vaginal wall thickness and lubrication after menopause.



# ANDROID SYSTEM



# Interface



- 1 Renting system, to be controlled by phone, very convenient;
- 2 Whether the host communicates with the screen;
- 3 Both channels can work simultaneously;
- 4 Treatment of parts: Arms / Abdomen / Hip/ Thigh/Calf;
- 5 Single EMS/RF or EMS+RF optional;
- 6 Real-time display and monitoring of temperature of power supply, IGBT, RF Power Supply, Handles;
- 7 Energy/Frequency/Time can be adjusted accurately;

# Interface

## Smart Android System

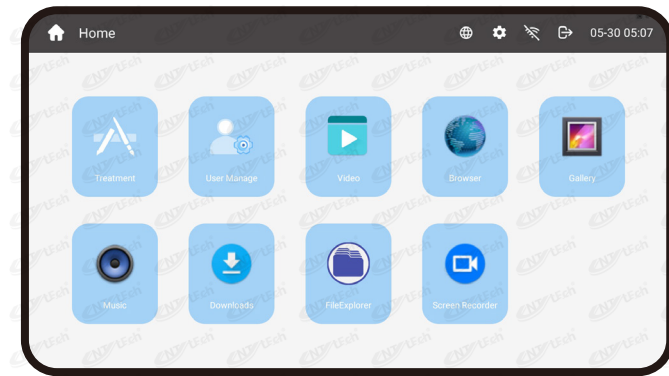
HI-BODY MAX2+/HI-BODY MAX1+/HI-BOD PRO2+/HI-BODY PRO1+, which uses advanced Android system, is not just a machine that add muscle, but also supports Internet access, storage and intelligent information processing. Now, in the information age, smart clinics need smarter machines. Smart Clinic is a multi-faceted solution that provides a complete picture of your business; whether it is a single clinic or a chain.

## Smart clinic data center

13.3-inch Android system guides you through each treatment. Intelligent selection based on the body parts, intelligent generate accurate parameters and treatment time ;Single EMS/RF or EMS+RF optional.

## User manage

Customer management is smarter. Customer information storage and treatment records, making the treatment process more efficient.



# Body Composition Analyzer

The Body Composition Analyzer connected with machine by bluetooth can record and analyze the varying data of before and after treatment, like weight, muscle, BMI index, obesity levels etc.

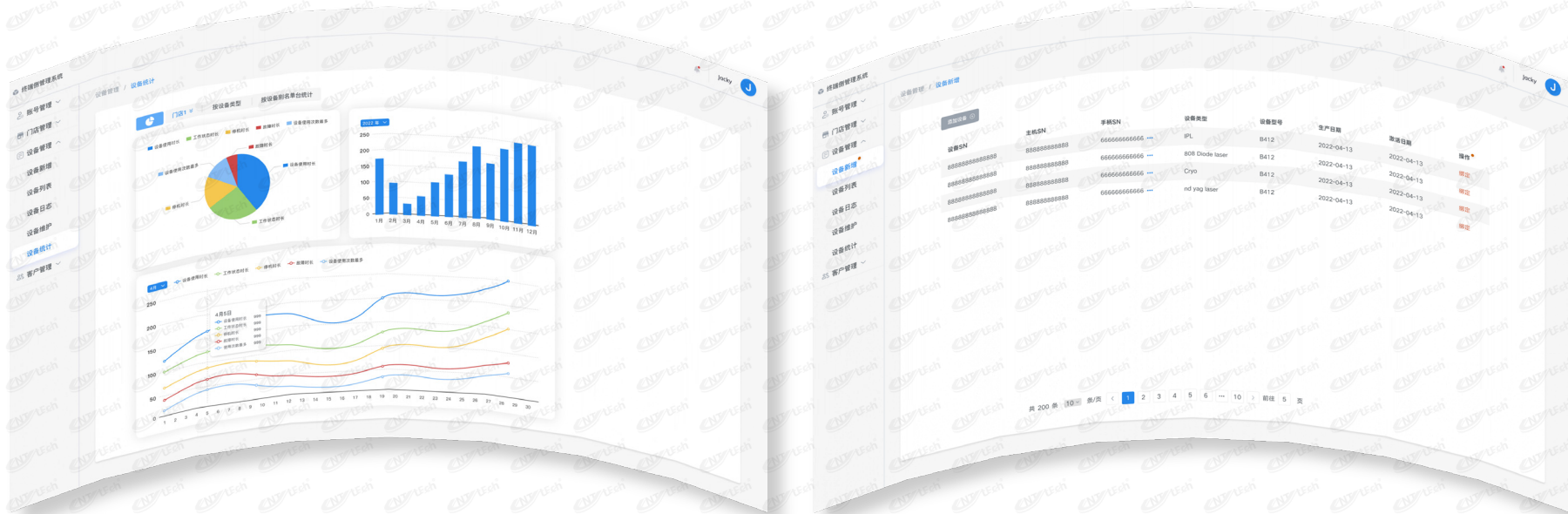


# WEB Customers/Equipment Management

According to the annual equipment usage records, generate annual data statistics, which is convenient for customers to manage and analyze the use of annual reports;

According to the records, the annual statistical curve is generated, which can be used as a reference for whether to add new equipment or maintenance in the next year.

The quarterly and monthly usage duration and frequency of equipment are collected to analyze market cycles.





# Internet

Clients can enjoy music, movies, games, and other entertainment activities during the treatment.



To get an attractive body you need to burn fat

2

Treatment/Week



Beautiful

&



Health

One course of treatment, Reduction of fat is

19%

Waist circumference loss

4cm

Fat metabolism increased to

5times

# EFFECT



# PARAMETER

Features	Parameters
Voltage	220V/110V
Electrical Power	4500W
RF Power	5M
Output Frequency	10-90hz
Pulse Duration	250us
Rated Power	2500W
Cooling System	Air Cooling
Operation System	13" Andriod Screen
Net Weight	40kg
Machine Size	37cm*59cm*36cm
Packing Size	73cm*73cm*59cm
Gross Weight	55kg



# PARAMETER

Features	Parameters
Voltage	220V/110V
Electrical Power	4500W
RF Power	5M
Output Frequency	10-90hz
Pulse Duration	250us
Rated Power	2500W
Cooling System	Air Cooling
Operation System	13" Andriod Screen
Net Weight	55kg
Machine Size	44cm*50cm*115cm
Packing Size	50cm*60cm*123cm
Gross Weight	72kg



# COMPANY PROFILE



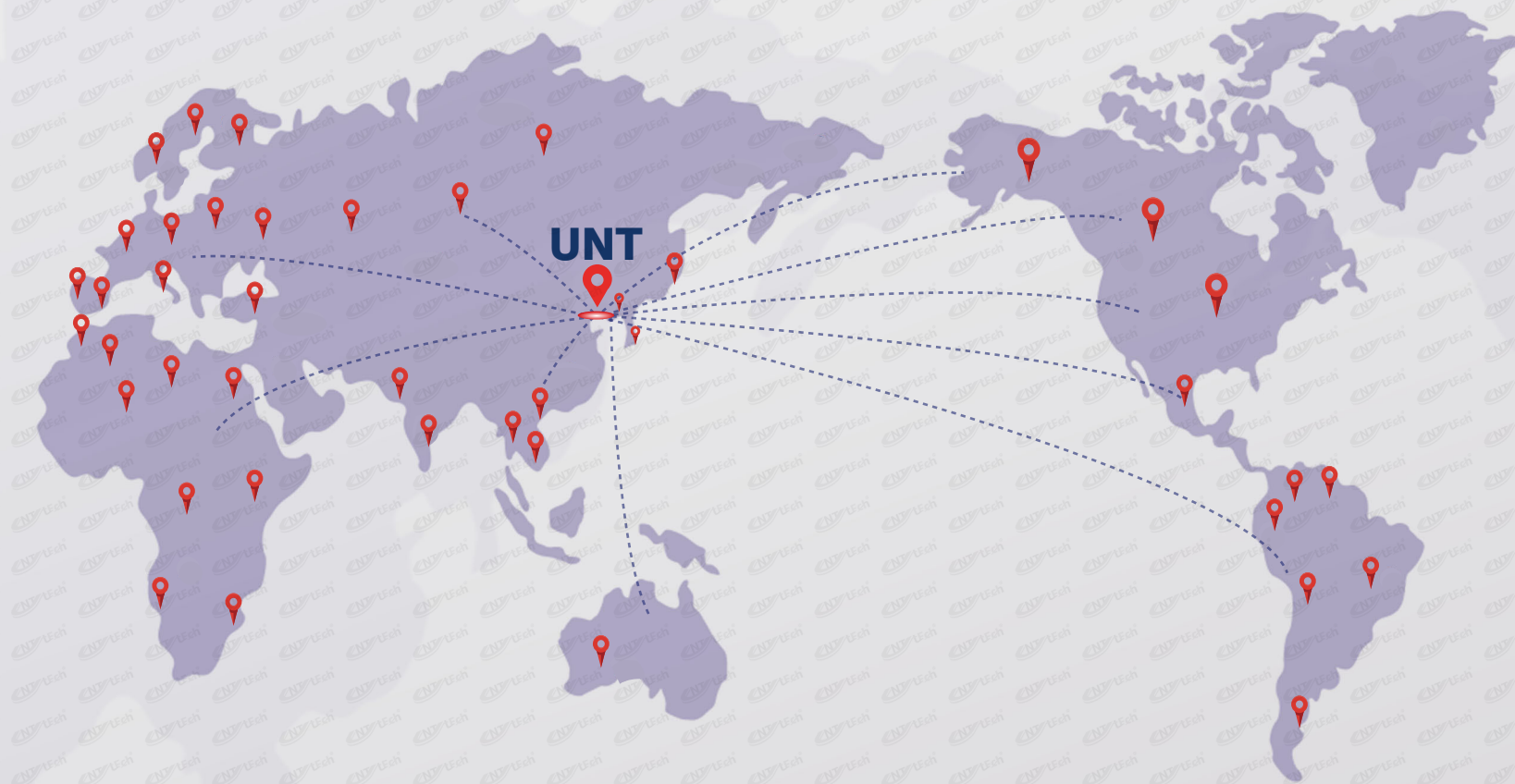
Ample spare parts reserve.  
Rich shell options.  
Instant delivery time.



UNT has a strong research and development team, including electronics engineers (designer; AVR programming; circuit layout) construction engineer, UI designer engineer QC control engineer...etc. We provide OEM/ODM design and program update.



In UNT we have been at the forefront of laser diode technology since 2010, We are committed with the clinics and practices to deliver them a platform that gives them the ability to get there results that the customers demand.



## Beijing UNT Technology Co.,Ltd

Address: M2-1 Area, Xinggu Development Zone, Pinggu District, Beijing 101200, China.

Website: <https://untlaser.en.alibaba.com/>

[www.untlaser.com](http://www.untlaser.com)

Contact: 86-010-61960002